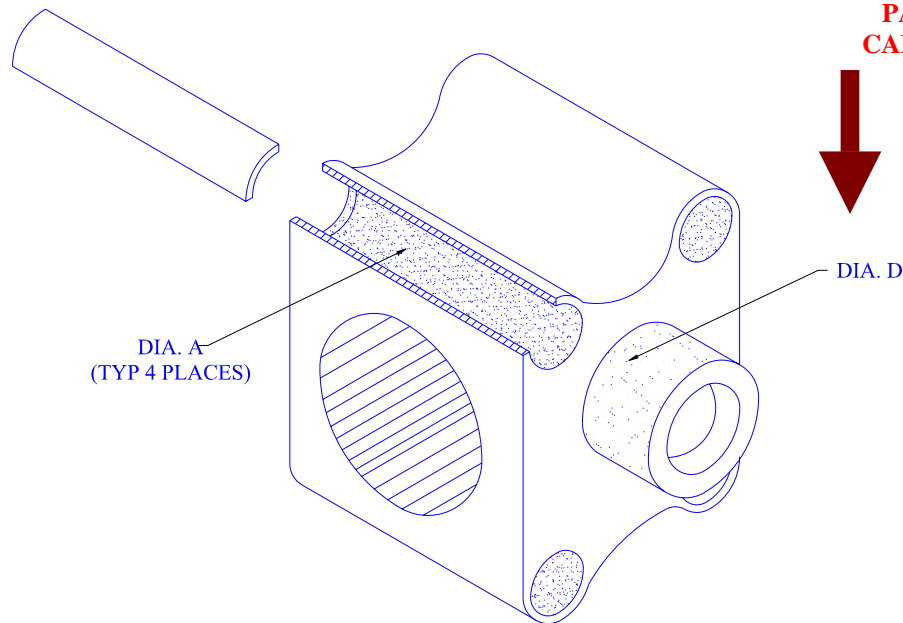




Your source for quality Hawker component  
Repairs and Overhauls.

## LANDING GEAR AFT TRUNION

25-6UM53-1, 25-6UM53-A, 25-8UM19-3, 25-8UM19-A,  
25-8UM57-1, 25-8UM57-3, 25-UM137-1, 25-UM137-9,



### Option

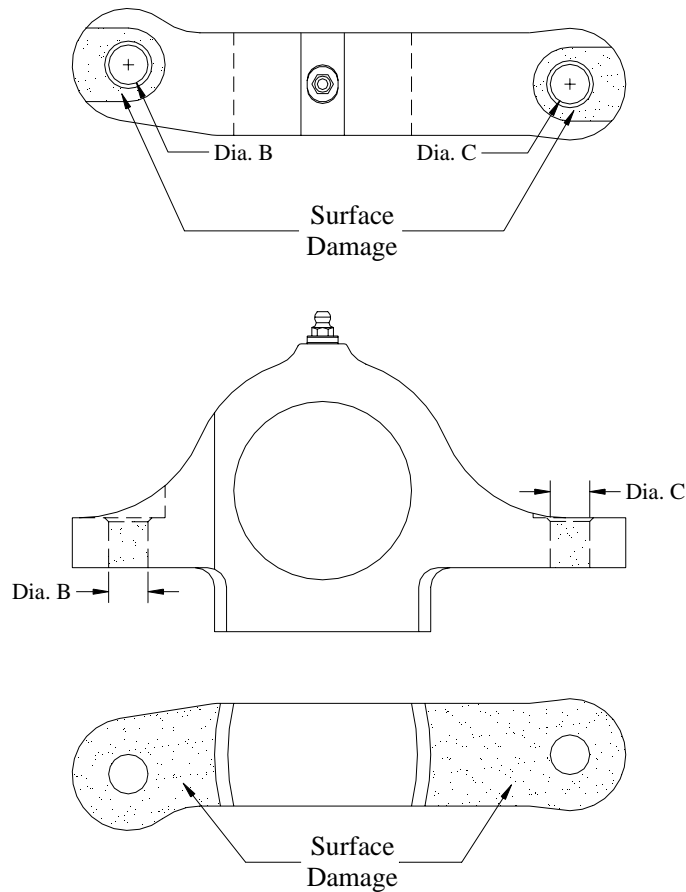
- DIA A Bolt Holes (All 4)**
- DIA A Repair of Bolt Holes (1 each)**
- DIA A Repair of Bolt Holes (2 each)**
- DIA A Repair of Bolt Holes (3 each)**
- DIA D Repair Collar**

*INSPECTION FEES APPLY*



## LANDING GEAR FWD TRUNION

25UM421AB, 25UM421AC, 25UM422AB, 25UM422AC,  
25UM421-9, 25UM421-10, 25UM422-11, 25UM422-12,  
256UM21A, 25-6UM22A, 25-6UM21-1, 25-6UM22-2, 25-8UM17-1,  
25-8UM18-2, 25-8UM55-1, 25-8UM56-2, 25-8UM17A, 25-  
8UM18A, 25-8UM55-11, 25-8UM55-12



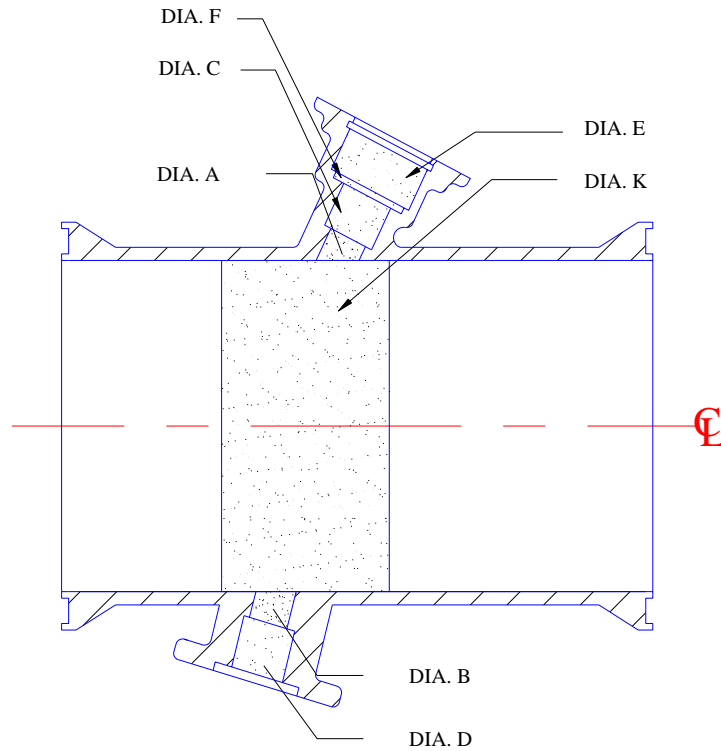
### Option

**DIA B & C**  
**Repair Surface Damage**

*INSPECTION FEES APPLY*



## 661194 SERIES VALVE BODY



### Option

- Y Axis Crosshole DIA A
- Y Axis Crosshole DIA B
- Large Bearing End Repair
- Main Bore Repair
- Small Bearing End Repair

*INSPECTION FEES APPLY*



# THRUST REVERSER HARDWARE KITS

(AERONCA STYLE)

**LEARJET 35,36,55/HAWKER HS125**



**HP201TR One Engine Hardware Kit**  
**HP200TR Two Engine Hardware Kit**

PART NUMBER	DESCRIPTION	QTY
<b>HP200TR</b>	<b>KIT-TWO ENGINE (1400 HR INSP)</b>	
AN960C10L	WASHER	24
AN960-416	WASHER	4
D6-1	WASHER	90
D6-4	WASHER	8
MS21043-3	NUT	28
MS21043-4	NUT	8
MS24665-151	COTTER PIN	12
MS24665-153	COTTER PIN	10
MS24665-302	COTTER PIN	4
MS9364-10	NUT	8
MS9464-09	PIN	8
NAS1291C4M	NUT	20
NAS1351C3-8	SCREW	20
NAS620C416L	WASHER	8
NAS620-416L	WASHER	32
232-20268-503HP	SHOULDER BOLT	8
232-20426-1HP	BUSHING	8
3515-28-04	WASHER	8
45-12216-1HP	BEARING	8

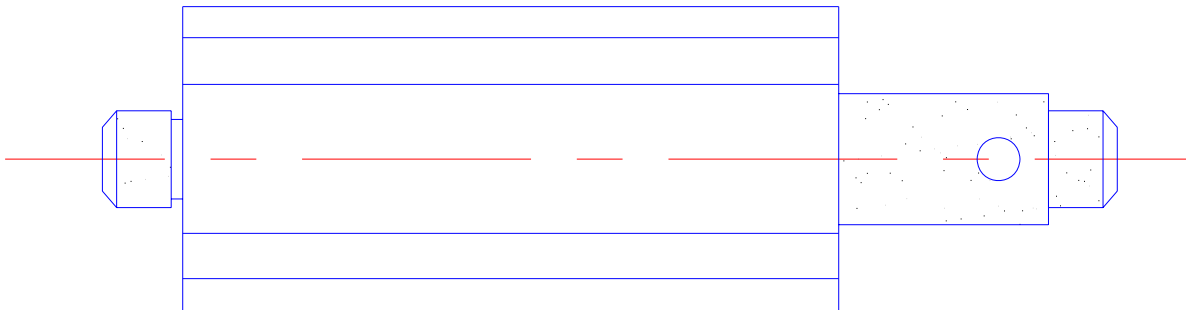
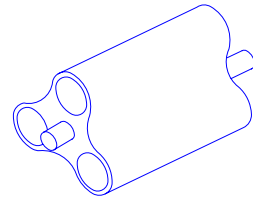
PART NUMBER	DESCRIPTION	QTY
<b>HP201TR</b>	<b>KIT-ONE ENGINE (1400 HR INSP)</b>	
AN960C10L	WASHER	12
AN960-416	WASHER	2
D6-1	WASHER	45
D6-4	WASHER	4
MS21043-3	NUT	14
MS21043-4	NUT	4
MS24665-151	COTTER PIN	6
MS24665-153	COTTER PIN	5
MS24665-302	COTTER PIN	2
MS9364-10	NUT	4
MS9464-09	PIN	4
NAS1291C4M	NUT	10
NAS1351C3-8	SCREW	10
NAS620C416L	WASHER	4
NAS620-416L	WASHER	16
232-20268-503HP	SHOULDER BOLT	4
232-20426-1HP	BUSHING	4
3515-28-04	WASHER	4
45-12216-1HP	BEARING	4



## PMA THRUST REVERSER PARTS

<u>Part Number</u>	<u>Description</u>
D6-1HP	WASHER
D6-4HP	WASHER
232-20260-1HP	BEARING
232-20268-503HP	SHOULDER BOLT
232-20426-1HP	BUSHING
3233190-2HP	VESPEL BEARING
45-12216-1HP	BEARING

## 3231254-1 & 3231254-2 THRUST REVERSER AIR MOTOR GEAR REPAIR



**Option**

**Repair**

***INSPECTION FEES APPLY***



## ADDITIONAL HAWKER PARTS & REPAIRS

<u>Part Number</u>	<u>Description</u>	<u>Option</u>
207218HP	Thrust Washer	NEW
207460HP	Bearing	NEW
232-20246-5	Latch Housing	OH

**CALL FOR A COMPLETE LIST OF  
HAWKER CAPABILITIES  
PH: (936) 494-1717  
TOLL FREE: (877) 309-4100**