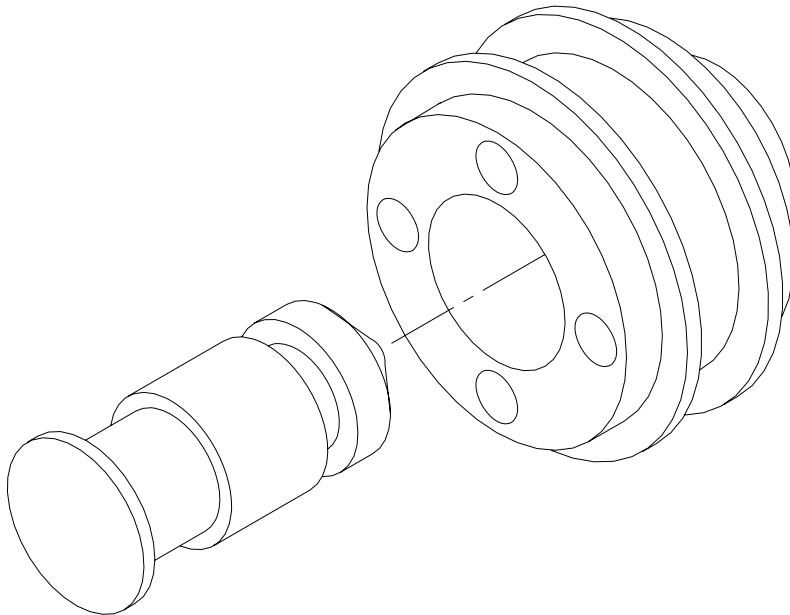
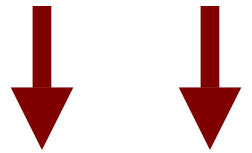




Your source for quality Twin Otter component  
Repairs and Overhals.

**SKS1017-1**  
**220-00300**  
**POPPET & SEAT ASSEMBLY**

**SCROLL DOWN FOR  
MORE  
TWIN OTTER  
PARTS AND  
CAPABILITIES**



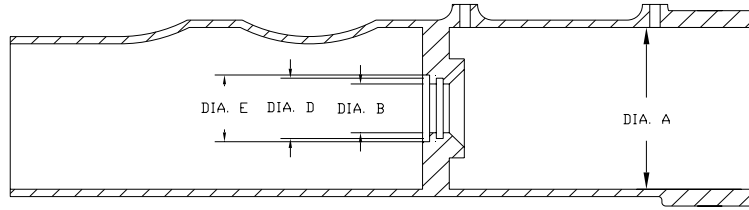
**REPAIRS**

**Overhaul**

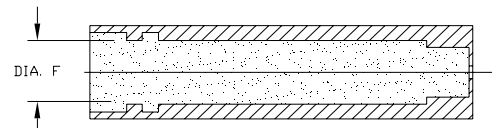
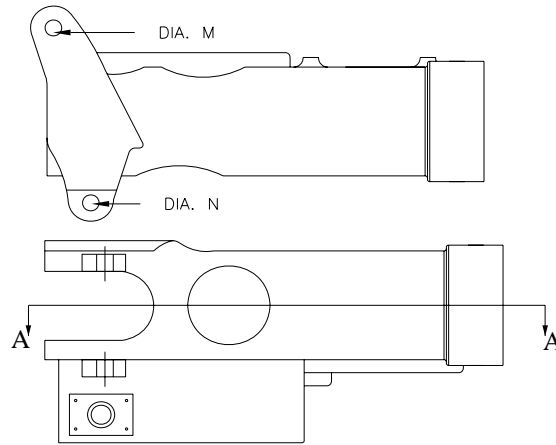
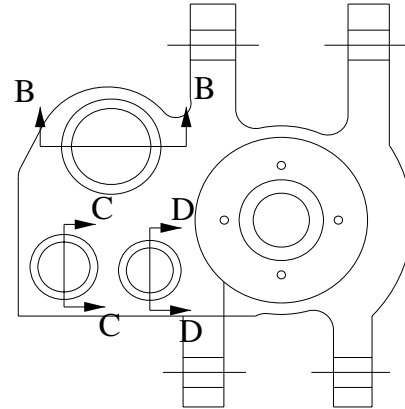
***INSPECTION FEES APPLY***



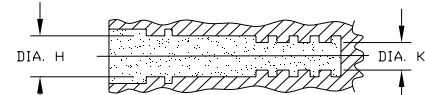
## 71-201-3, 71-215-1, 71-215-9 MANIFOLD REPAIR & CAP REPAIR



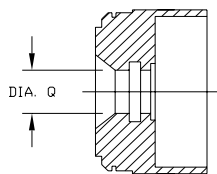
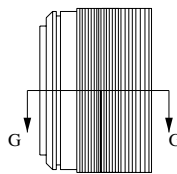
SECTION A-A



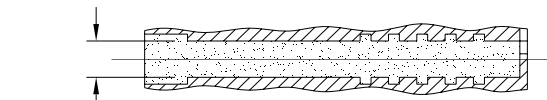
SECTION B-B



SECTION C-C



SECTION G-G



SECTION D-D

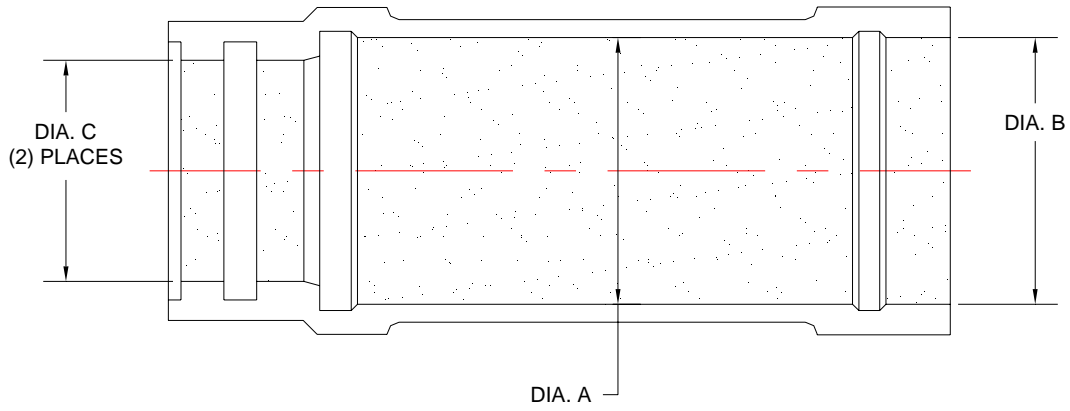
### REPAIRS

- DIA A MAIN BORE
- DIA M 2 BOLT HOLES
- DIA N 2 BOLT HOLES
- DIA B SHAFT ACCESS
- DIA D
- DIA E
- DIA F
- DIA H & K
- DIA W
- DIA Q CAP REPAIR
- BOSS THREAD REPAIRS

*INSPECTION FEES APPLY*



## C6HFM1021-1 FLAP ACTUATOR HOUSING



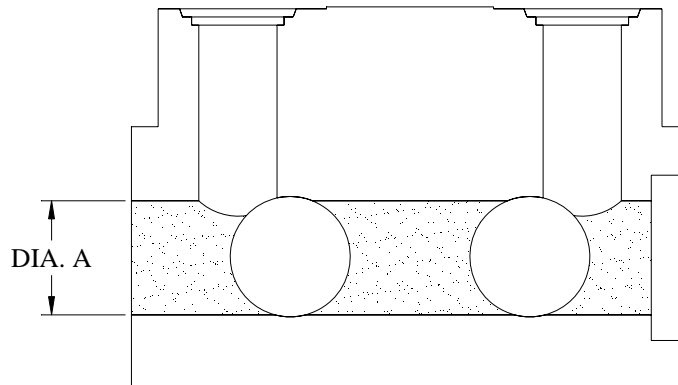
### REPAIRS

**DIA A**  
**DIA B**  
**DIA C**

*INSPECTION FEES APPLY*



## **SFD1439-1 195-01100 FLAP SELECTOR VALVE**



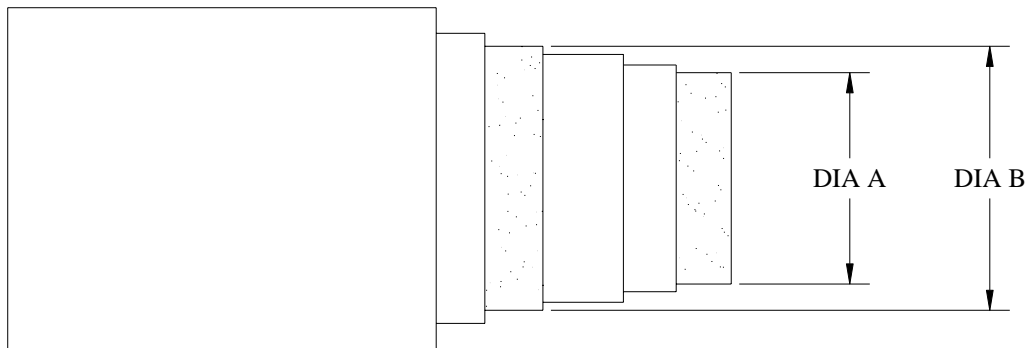
### **REPAIRS**

**DIA A (Camshaft Bore)**

***INSPECTION FEES APPLY***



## C4CM1952-11 CABLE DRUM DRIVE REPAIR



### REPAIRS

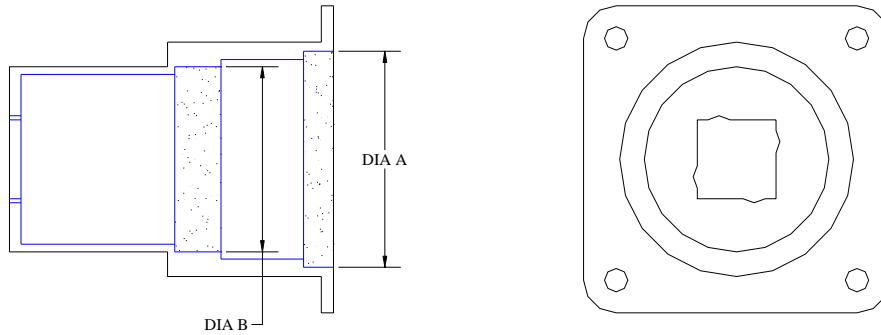
**DIA A**

**DIA B**

*INSPECTION FEES APPLY*



## C4M1953-13 COVER REPAIR



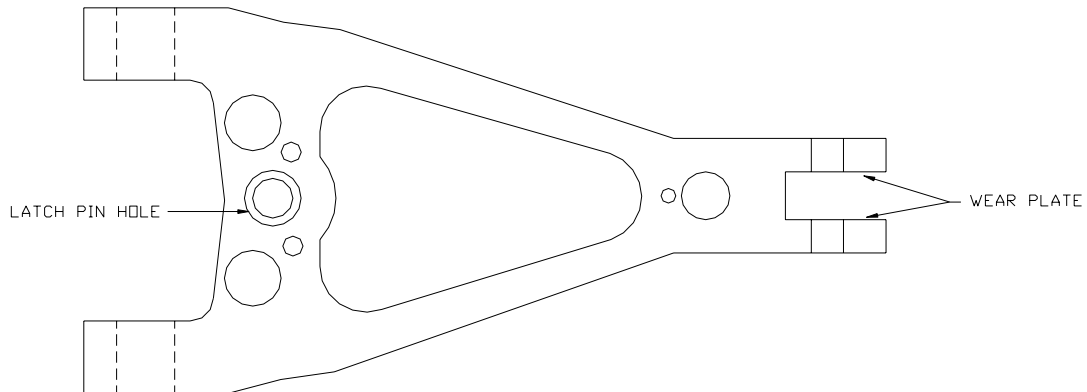
### REPAIRS

**DIA A**  
**DIA B**

***INSPECTION FEES APPLY***



## UPPER TORQUE ARM 71-102-5



### REPAIRS

**Latch Pin Hole  
Wear Plate Area**

*INSPECTION FEES APPLY*

**CALL FOR A COMPLETE LIST OF  
TWIN OTTER CAPABILITIES**

**PH: (936) 494-1717**

**TOLL FREE: (877) 309-4100**